

Name _____ Date _____

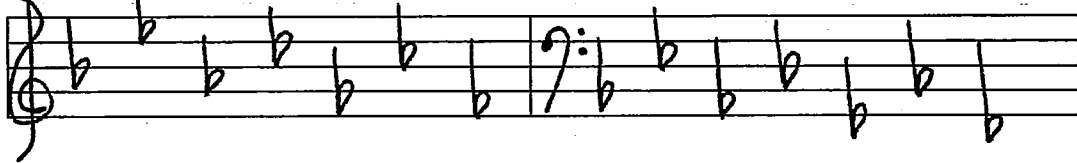
Skill Drill 4
Key Signatures/Flats

Memorize this: BEAD, GO CATCH FISH That's: BEADGCF

That is the order the FLATS are placed on the staff for KEY SIGNATURES.

This is the only placement and order you will find the flats on the staff.

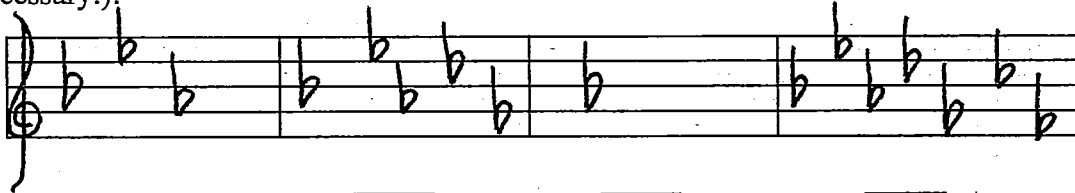
Name the Flats:



When identifying FLAT key signatures, the next to the last flat is the name of the key.
***You must memorize the fact that the key of "F" has just one flat.

Which one flat is in the key of "F"? _____ (hint: the first flat in beadgcf)

Identify the following Key Signatures. (Don't forget "flat" in the name of the key, if necessary.):



Place all seven flats in correct order on the staff (you must draw the clef first):

Treble Clef

Bass Clef

_____	_____
_____	_____
_____	_____

What Key Signature has only one flat? The Key of _____.

Identify the following Key Signatures:

A musical staff with a treble clef. The key signature consists of one flat (F). The notes are: F4, G4, A4, Bb4, C5, Bb4, A4, G4, F4.

A musical staff with a bass clef. The key signature consists of two flats (Bb). The notes are: Bb3, C4, D4, Eb4, F4, G4, Ab4, Bb4, C5.

Place all seven flats in correct order on the staff:

Bass Clef

Treble Clef

An empty musical staff divided into two sections by a vertical line. The left section is labeled 'Bass Clef' and the right section is labeled 'Treble Clef'.

Place the correct Key Signature in each measure:

A musical staff with a treble clef, divided into four measures.

F

Db

Bb

Ab

A musical staff with a treble clef, divided into three measures.

Eb

Cb

Gb

A musical staff with a bass clef, divided into four measures.

Ab

F

Gb

Db

A musical staff with a bass clef, divided into three measures.

Bb

Cb

Eb