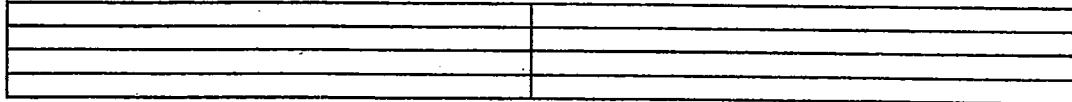


Name \_\_\_\_\_ Date \_\_\_\_\_

### Skill Drill 3 Measures and Time Signatures

Vertical black bars called bar lines divide the staff into measures.



The above staff has been split into two measures.

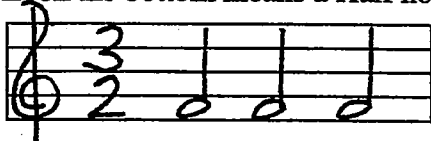
Time signatures define the amount and type of notes that each measure contains.

Time signatures consist of two numbers. The UPPER number indicates how many beats there are in a measure. The LOWER number indicates what kind of note should be counted as one beat.

A **4** on the bottom means a Quarter note receives one beat.



A **2** on the bottom means a Half note receives one beat.



An **8** on the bottom means an Eighth note receives one beat.



After each of the following time signatures, write the number of beats in each measure, and DRAW the kind of note that gets one beat:

2= \_\_\_ beats, a \_\_\_ gets 1 beat.  
4

2= \_\_\_ beats, a \_\_\_ gets 1 beat.  
2

6= \_\_\_ beats, a \_\_\_ gets 1 beat  
8

3= \_\_\_ beats, a \_\_\_ gets 1 beat  
4

4= \_\_\_ beats, a \_\_\_ gets 1 beat  
4

9= \_\_\_ beats, a \_\_\_ gets 1 beat  
8

Draw the correct bar lines in the music:

The image shows four musical staves with notes and time signatures, but no bar lines. The first staff is in treble clef with a 3/4 time signature and contains eight notes: a quarter note, two eighth notes, a quarter note, a quarter note, a quarter note, a quarter note, a quarter note, and a quarter note. The second staff is in bass clef with a 2/2 time signature and contains six notes: a half note, a half note, a quarter note, a quarter note, a half note, and a whole note. The third staff is in treble clef with a 6/8 time signature and contains eight notes: a quarter note, a quarter note, a quarter note, a quarter note, a quarter note, a quarter note, a quarter note, and a quarter note. The fourth staff is in bass clef with a 4/4 time signature and contains eight notes: a quarter note, a quarter note, a quarter note, a quarter note, a quarter note, a quarter note, a quarter note, and a quarter note.

Write in the time signature at the beginning of each measure:

The image shows a single musical staff with four measures of music. The first measure contains three eighth notes. The second measure contains four eighth notes. The third measure contains a quarter note, a quarter note, and a quarter note. The fourth measure contains a quarter note, a quarter note, and a quarter note. The time signature is to be written at the beginning of each measure.